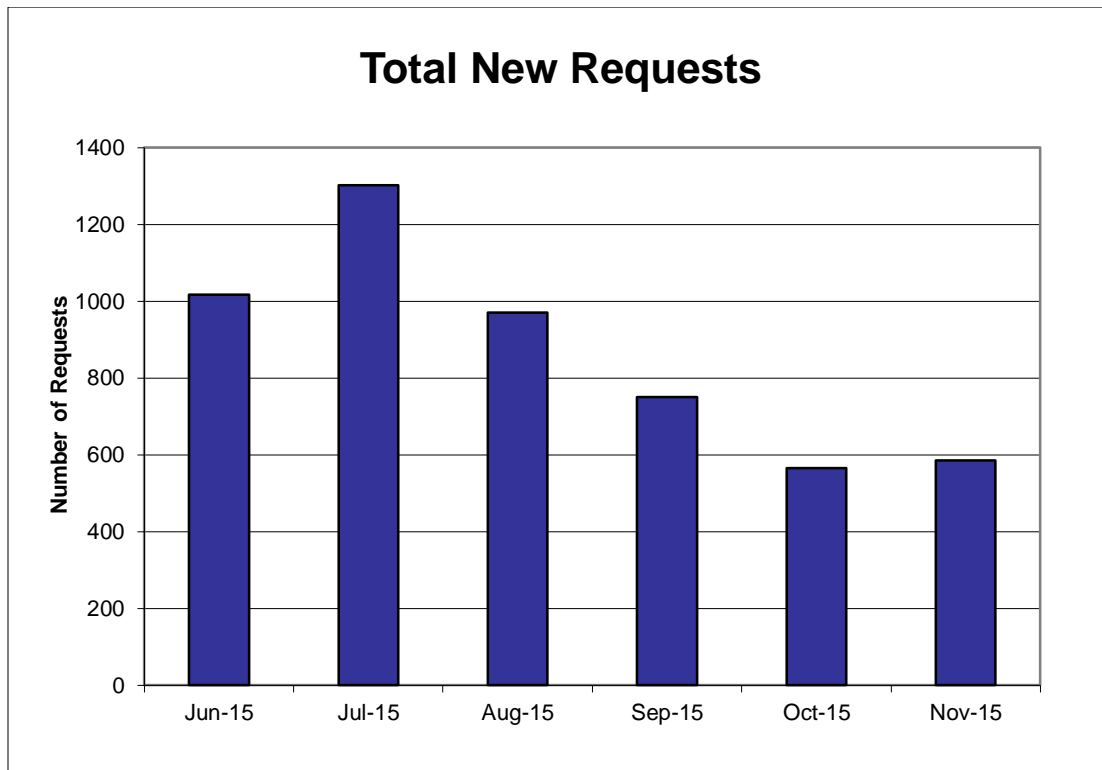


# USCAUXILIARYSERVICESIT

## Service Desk Reports

November 2015



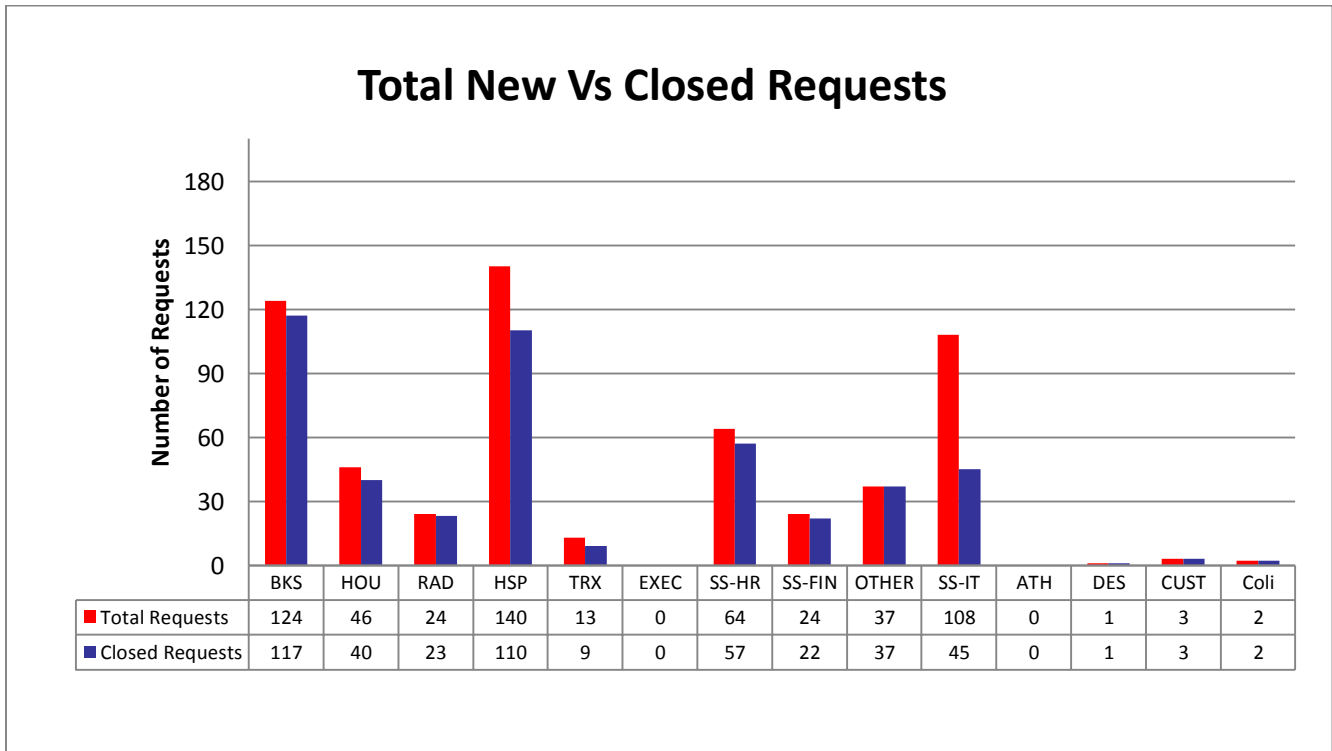
**Confidential:**

*The information contained in this document is the exclusive and confidential property of The University of Southern California - Auxiliary Services IT. February not be shared with any other parties without the written permission of The University of Southern California - Auxiliary Service.*

# USCAUXILIARYSERVICESIT

## Service Desk Reports

November 2015



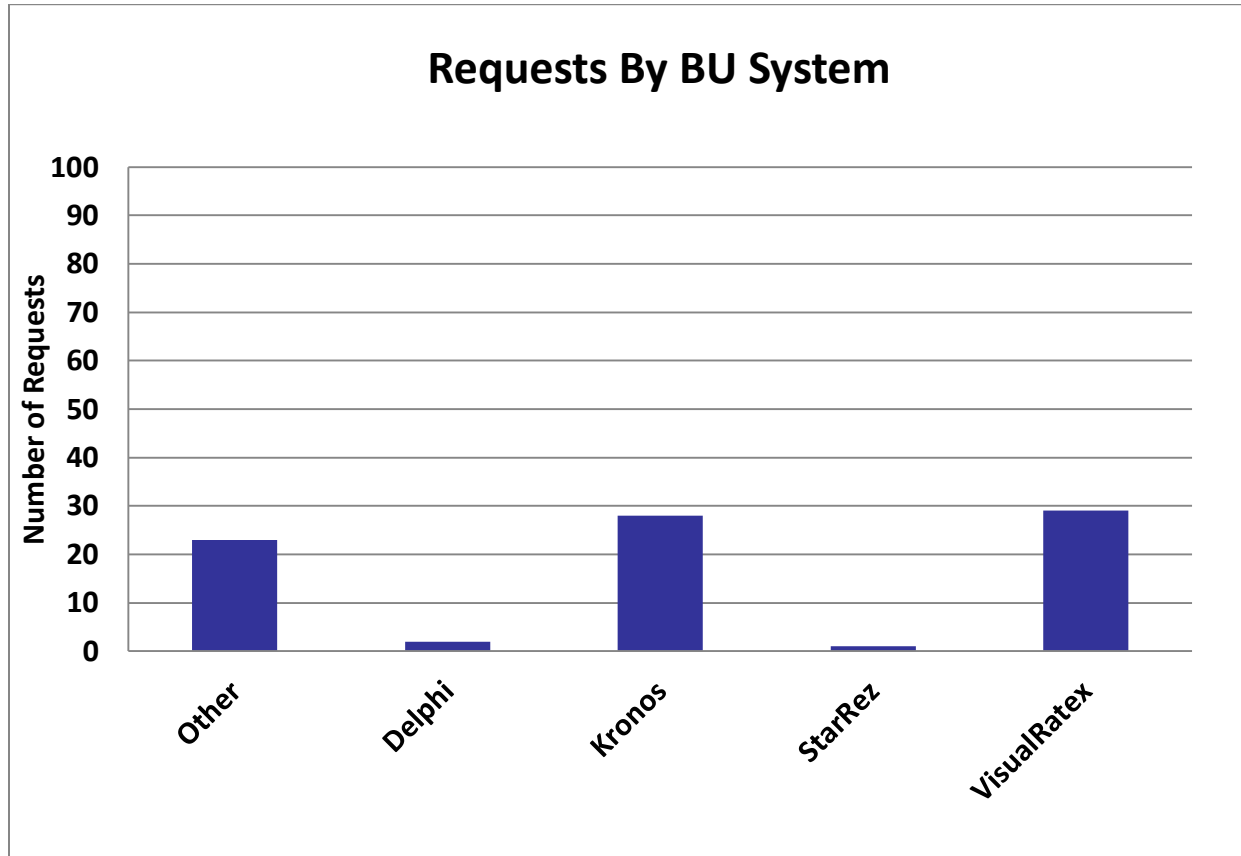
**Confidential:**

*The information contained in this document is the exclusive and confidential property of The University of Southern California - Auxiliary Services IT February not be shared with any other parties without the written permission of The University of Southern California - Auxiliary Service.*

# USCAUXILIARYSERVICESIT

## Service Desk Reports

November 2015



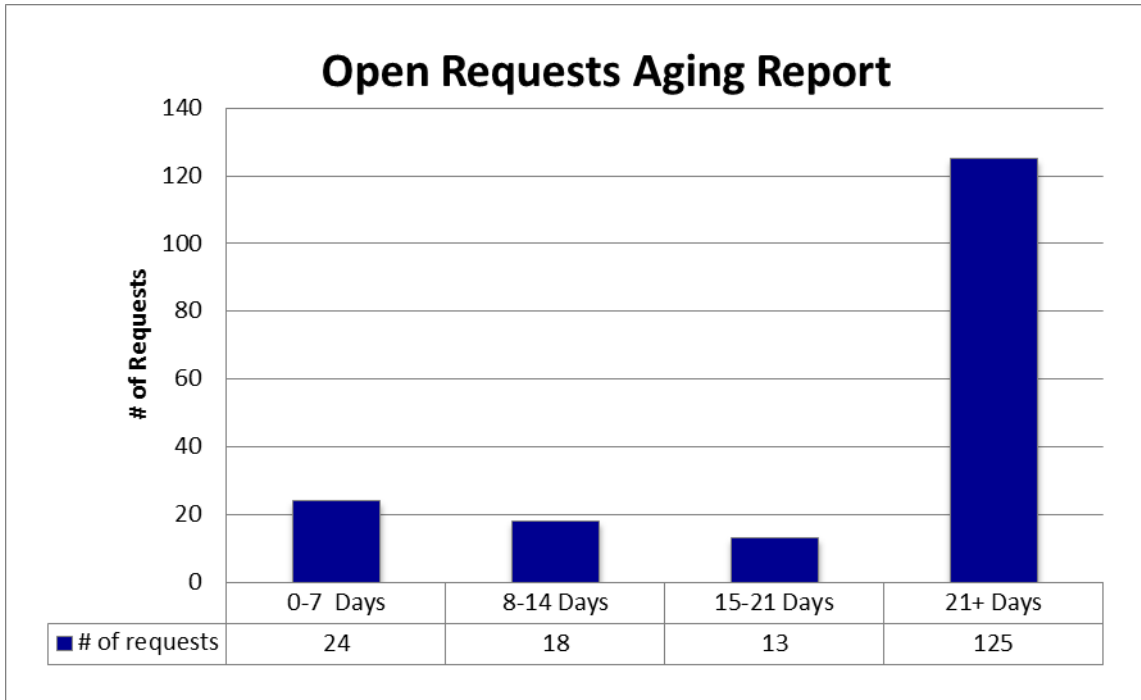
Confidential:

*The information contained in this document is the exclusive and confidential property of The University of Southern California - Auxiliary Services IT. February not be shared with any other parties without the written permission of The University of Southern California - Auxiliary Service.*

# USCAUXILIARYSERVICESIT

## Service Desk Reports

November 2015



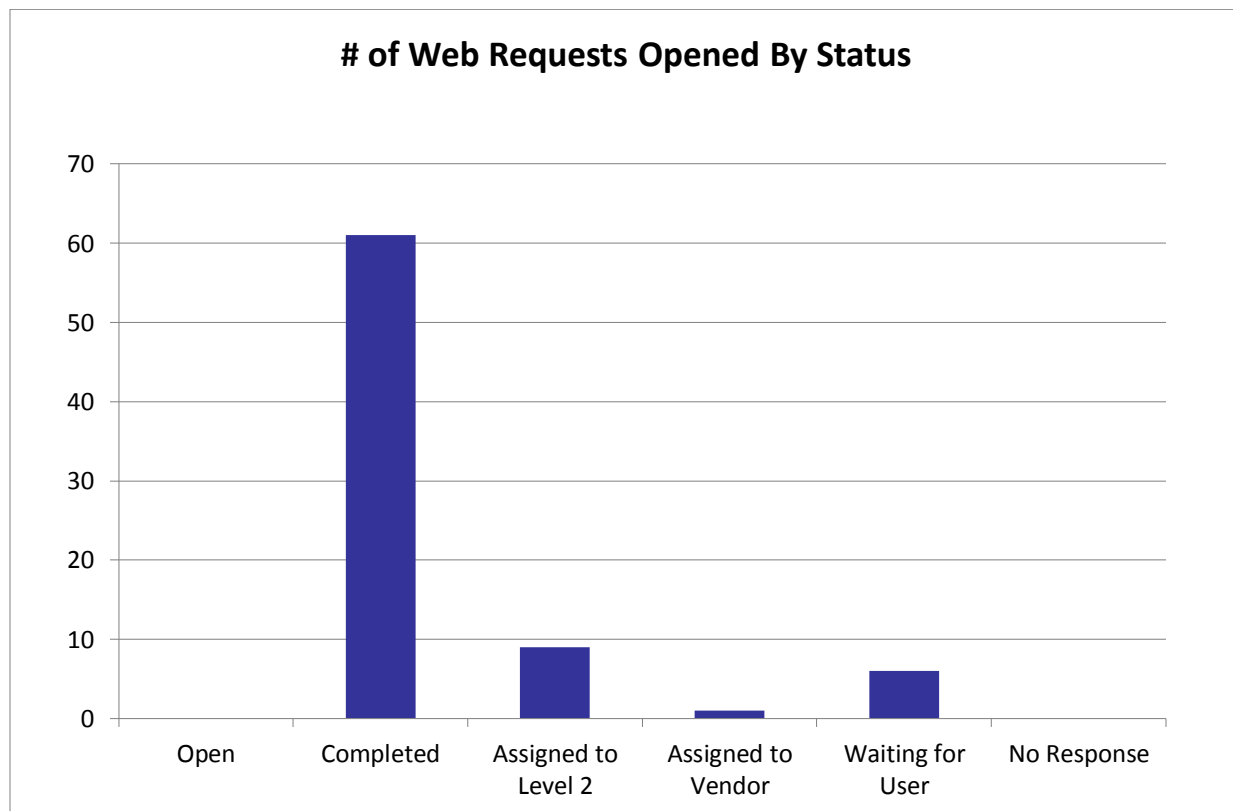
**Confidential:**

*The information contained in this document is the exclusive and confidential property of The University of Southern California - Auxiliary Services IT. February not be shared with any other parties without the written permission of The University of Southern California - Auxiliary Service.*

# USCAUXILIARYSERVICESIT

## Service Desk Reports

November 2015



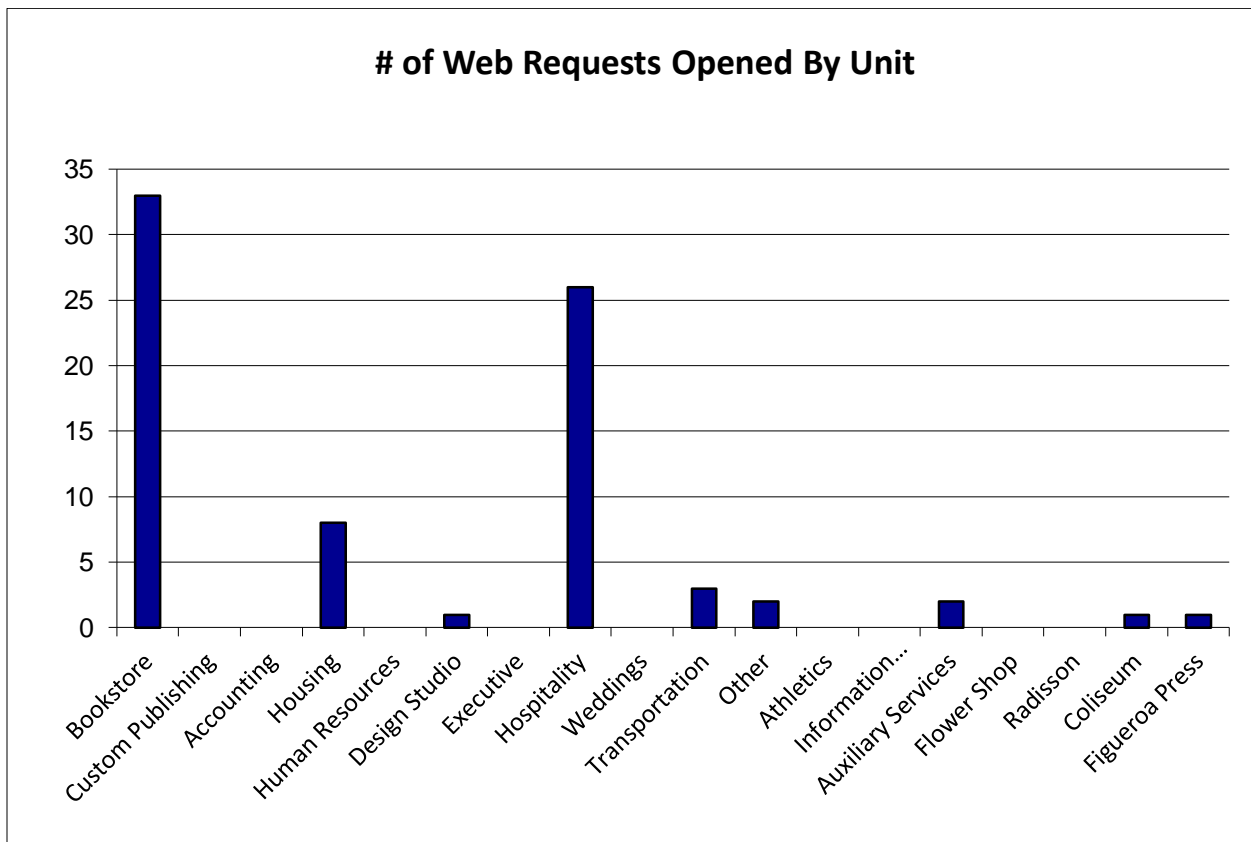
**Confidential:**

*The information contained in this document is the exclusive and confidential property of The University of Southern California - Auxiliary Services IT. February not be shared with any other parties without the written permission of The University of Southern California - Auxiliary Service.*

# USCAUXILIARYSERVICESIT

## Service Desk Reports

November 2015



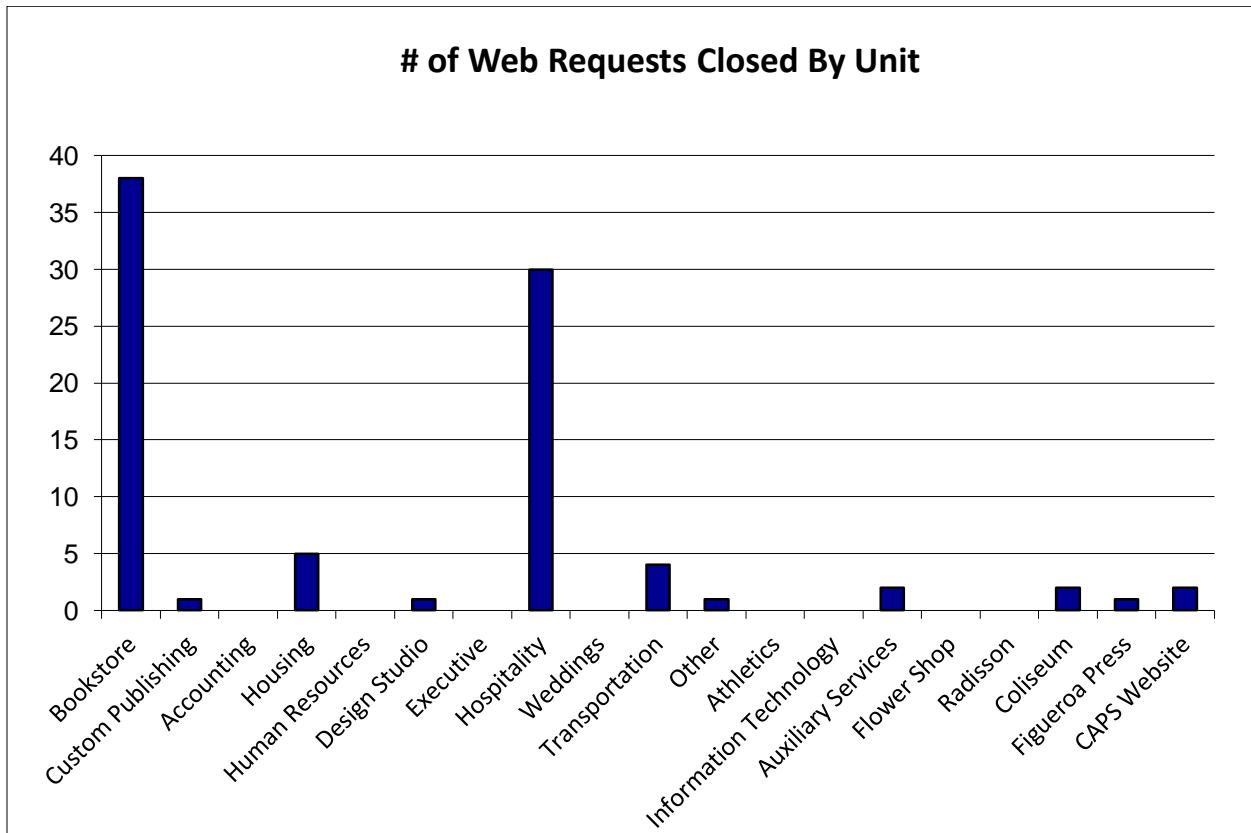
**Confidential:**

*The information contained in this document is the exclusive and confidential property of The University of Southern California - Auxiliary Services IT February not be shared with any other parties without the written permission of The University of Southern California - Auxiliary Service.*

# USCAUXILIARYSERVICESIT

## Service Desk Reports

November 2015



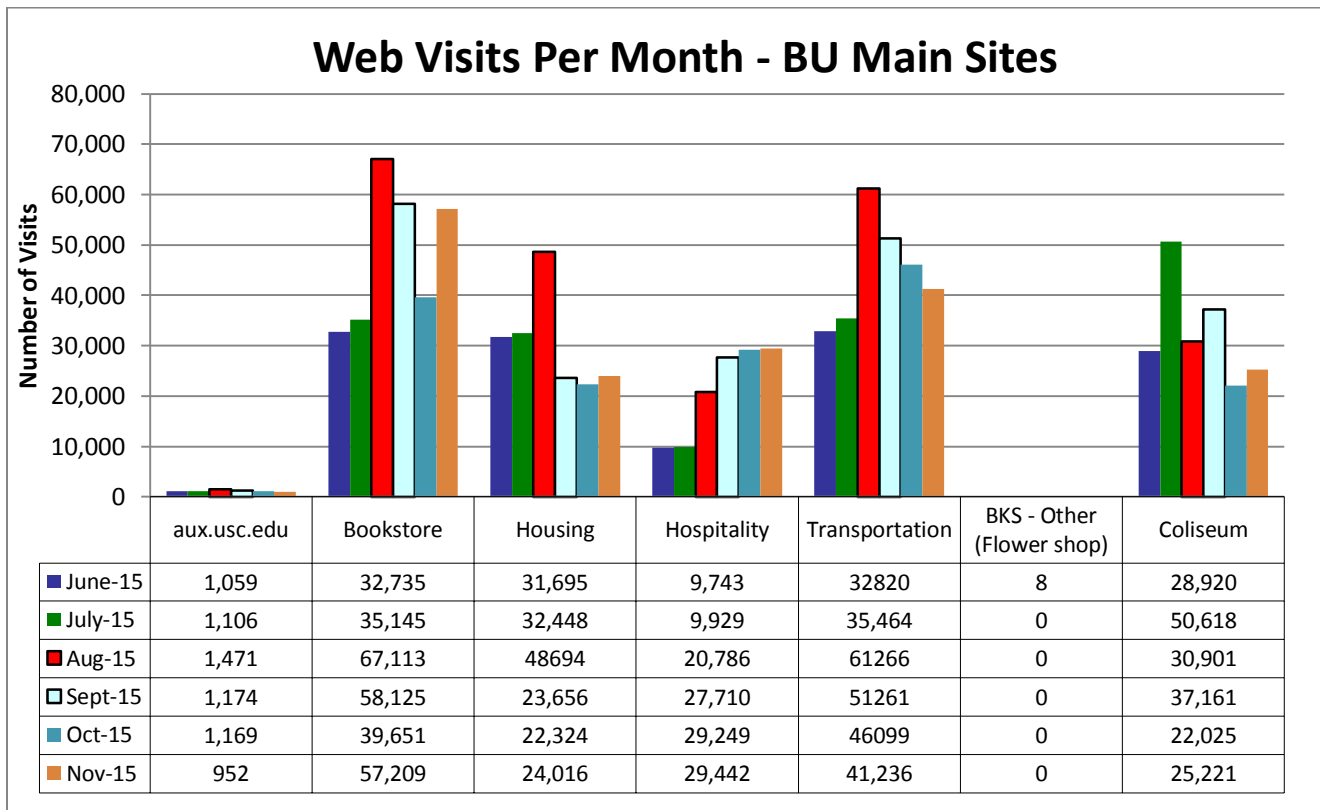
Confidential:

*The information contained in this document is the exclusive and confidential property of The University of Southern California - Auxiliary Services IT. February not be shared with any other parties without the written permission of The University of Southern California - Auxiliary Service.*

# USCAUXILIARYSERVICESIT

## Website Reports

November 2015



**Confidential:**

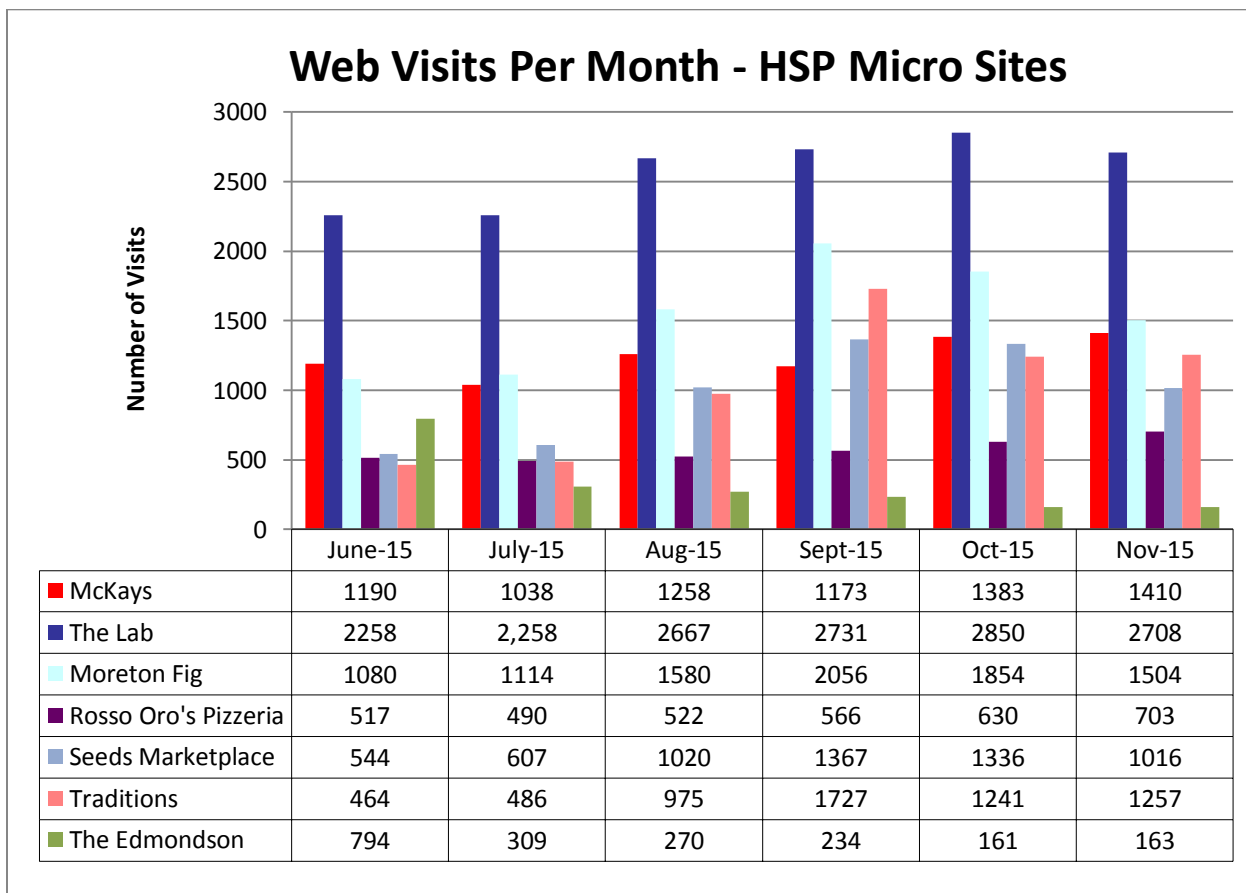
*The information contained in this document is the exclusive and confidential property of The University of Southern California - Auxiliary Services IT February not be shared with any other parties without the written permission of The University of Southern California - Auxiliary Service.*



# USCAUXILIARYSERVICESIT

## Website Reports

November 2015



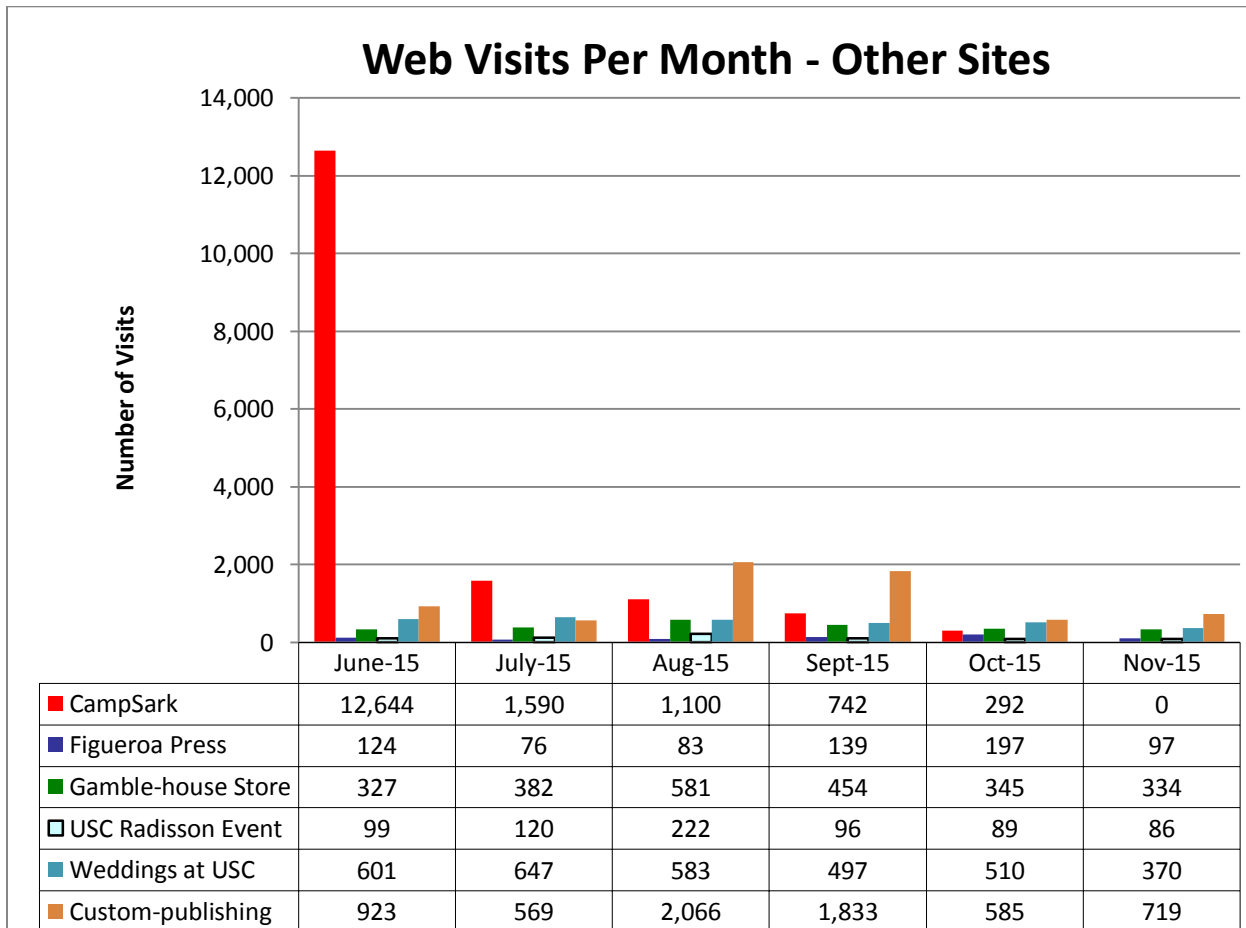
**Confidential:**

*The information contained in this document is the exclusive and confidential property of The University of Southern California - Auxiliary Services IT. February not be shared with any other parties without the written permission of The University of Southern California - Auxiliary Service.*

# USCAUXILIARYSERVICESIT

## Website Reports

November 2015



**Confidential:**

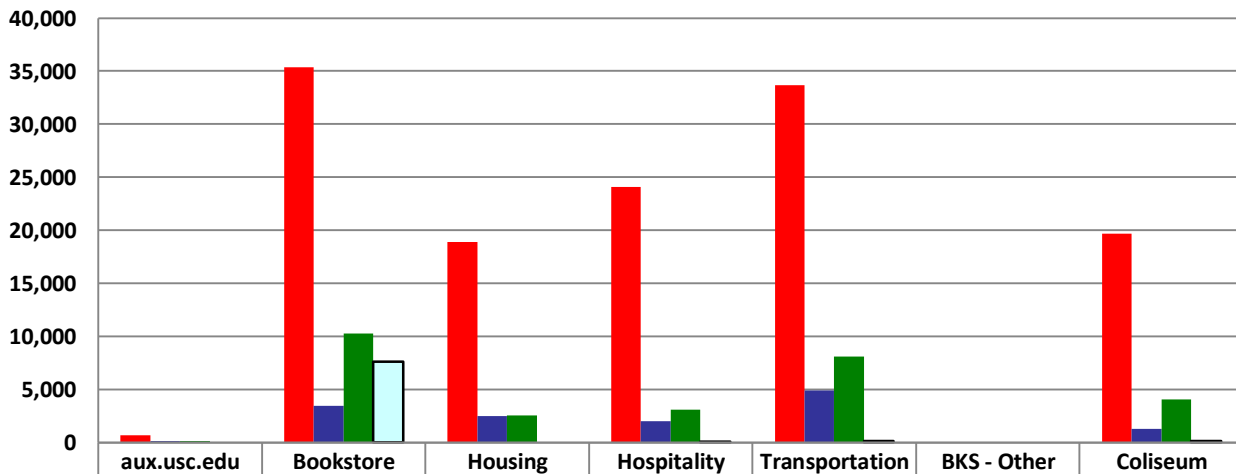
*The information contained in this document is the exclusive and confidential property of The University of Southern California - Auxiliary Services IT. February not be shared with any other parties without the written permission of The University of Southern California - Auxiliary Service.*

# USCAUXILIARYSERVICESIT

## Website Reports

November 2015

November 2015 Traffic Sources - BU Main Sites



	aux.usc.edu	Bookstore	Housing	Hospitality	Transportation	BKS - Other	Coliseum
Search Engine	686	35,355	18,876	24,100	33,680	0	19,664
Referring Sites	138	3,470	2,511	2,032	4,909	0	1,293
Direct Traffic	120	10,276	2,550	3,132	8,080	0	4,041
Campaigns	0	7,609	0	56	164	0	127

Confidential:

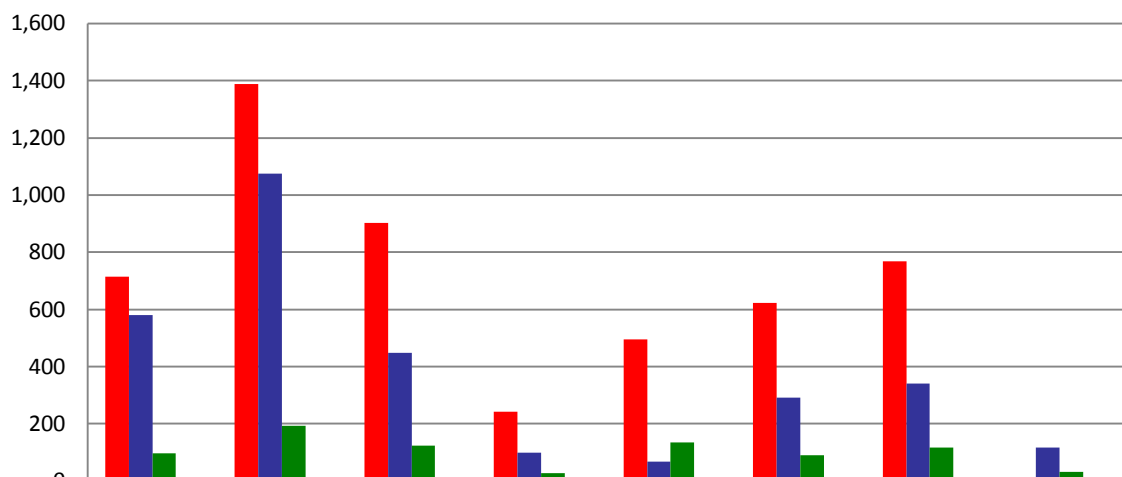
The information contained in this document is the exclusive and confidential property of The University of Southern California - Auxiliary Services IT. February not be shared with any other parties without the written permission of The University of Southern California - Auxiliary Service.

# USCAUXILIARYSERVICESIT

## Website Reports

November 2015

### November 2015 Traffic Sources - HSP Micro Sites



	McKays	The Lab	Moreton Fig	Weddings at USC	Rosso Oro's Pizzeria	Seeds Marketplace	Traditions	The Edmondson
Search Engine	714	1,387	903	243	495	623	768	6
Referring Sites	580	1,075	449	98	68	291	341	116
Direct Traffic	97	194	124	27	134	89	116	32
Campaigns	0	2	2	0	0	0	4	0

Confidential:

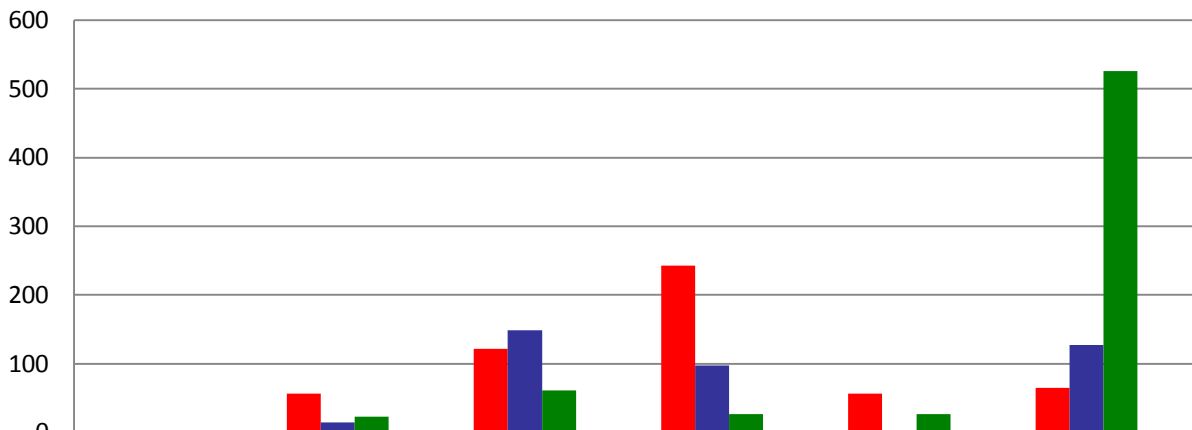
The information contained in this document is the exclusive and confidential property of The University of Southern California - Auxiliary Services IT. February not be shared with any other parties without the written permission of The University of Southern California - Auxiliary Service.

**USCAUXILIARYSERVICESIT**

**Website Reports**

**November 2015**

**November 2015 Traffic Sources - Other Sites**



	Coach Sark Camp	Figueroa Press	Gamble-house Store	Weddings at USC	USC Radisson Event	Custom-publishing
Search Engine	0	57	122	243	57	65
Referring Sites	0	15	149	98	2	127
Direct Traffic	0	23	61	27	27	526
Campaigns	0	0	0	0	0	0

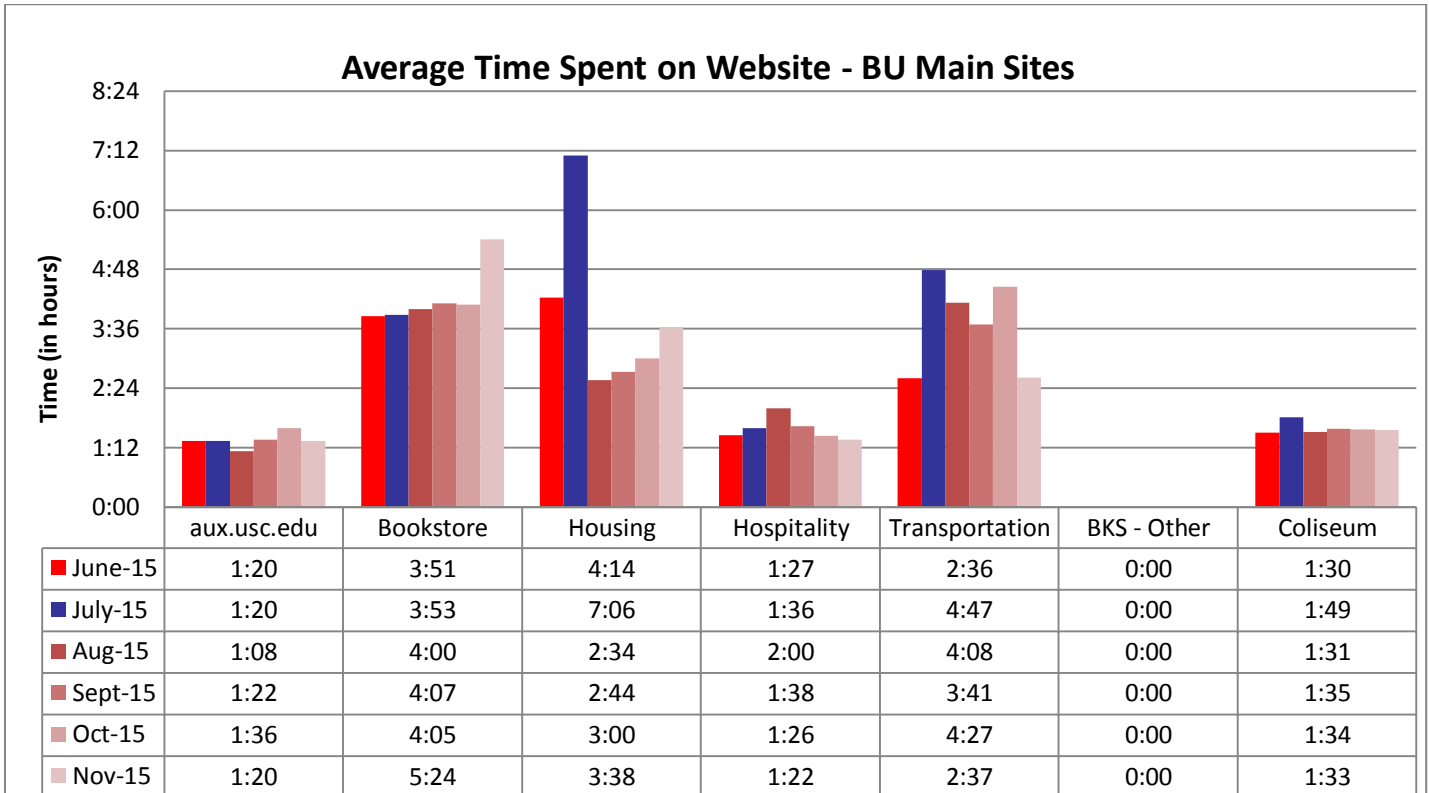
**Confidential:**

*The information contained in this document is the exclusive and confidential property of The University of Southern California - Auxiliary Services IT February not be shared with any other parties without the written permission of The University of Southern California - Auxiliary Service.*

# USCAUXILIARYSERVICESIT

## Website Reports

November 2015



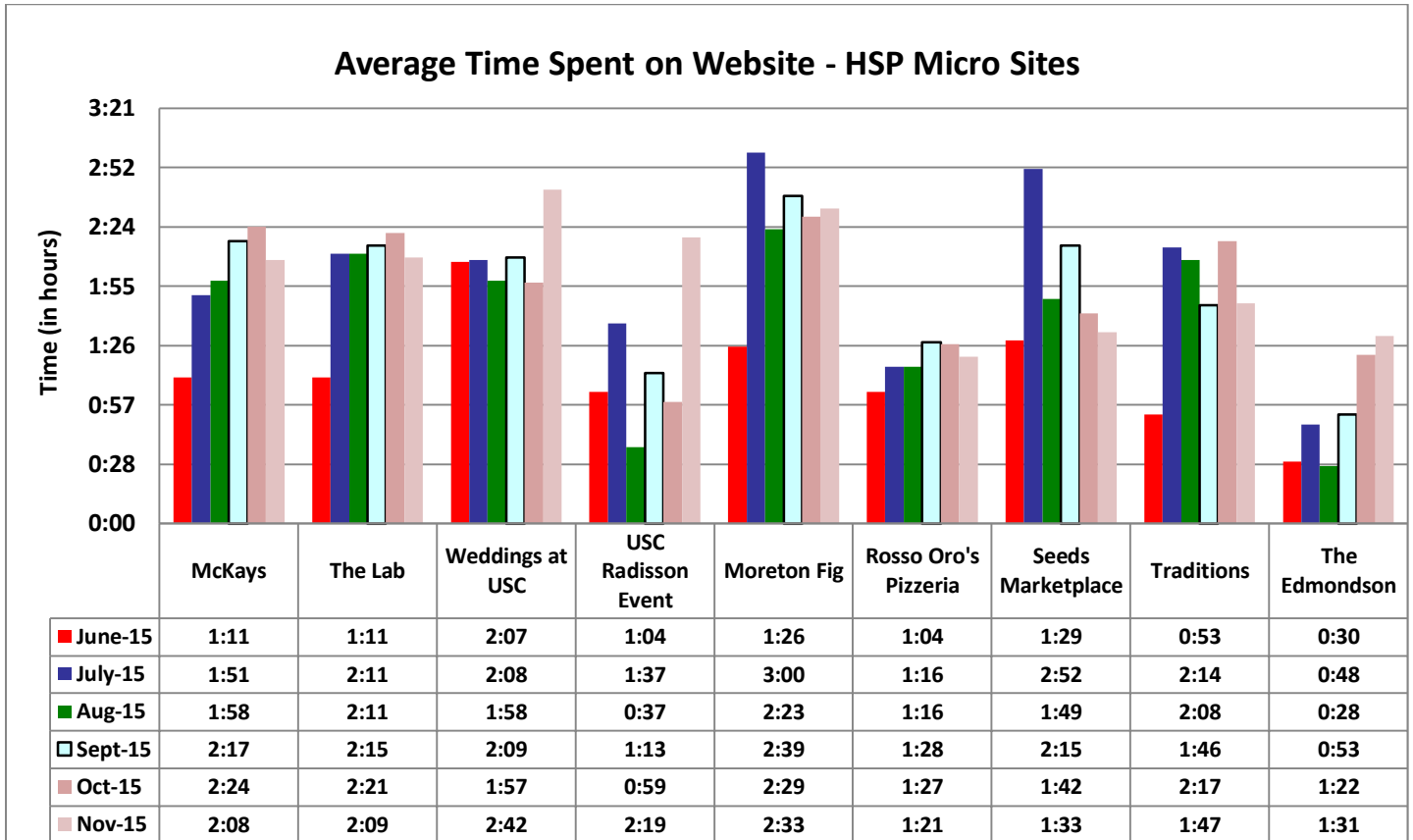
**Confidential:**

*The information contained in this document is the exclusive and confidential property of The University of Southern California - Auxiliary Services IT February not be shared with any other parties without the written permission of The University of Southern California - Auxiliary Service.*

# USCAUXILIARYSERVICESIT

## Website Reports

November 2015



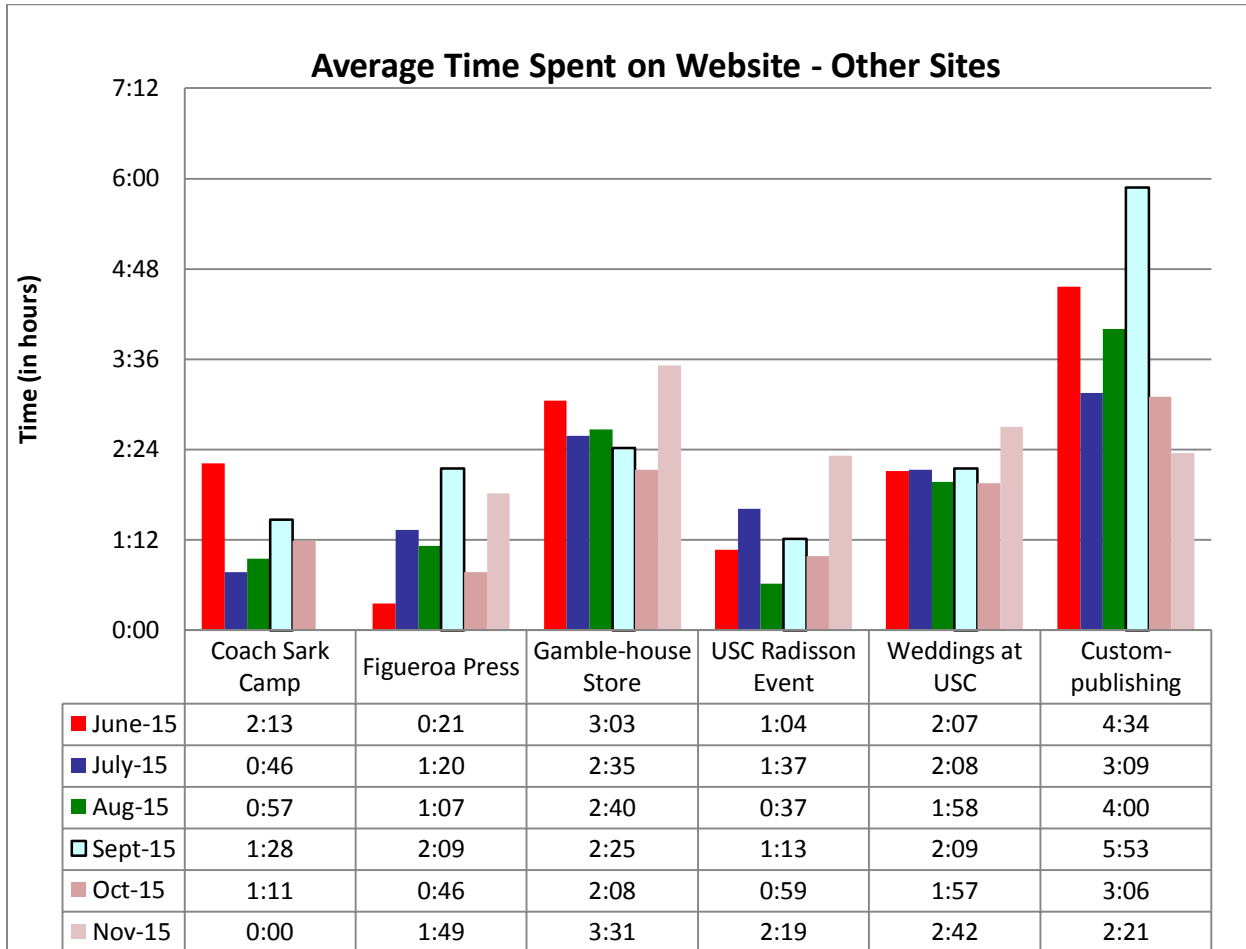
Confidential:

*The information contained in this document is the exclusive and confidential property of The University of Southern California - Auxiliary Services IT February not be shared with any other parties without the written permission of The University of Southern California - Auxiliary Service.*

# USCAUXILIARYSERVICESIT

## Website Reports

November 2015



**Confidential:**

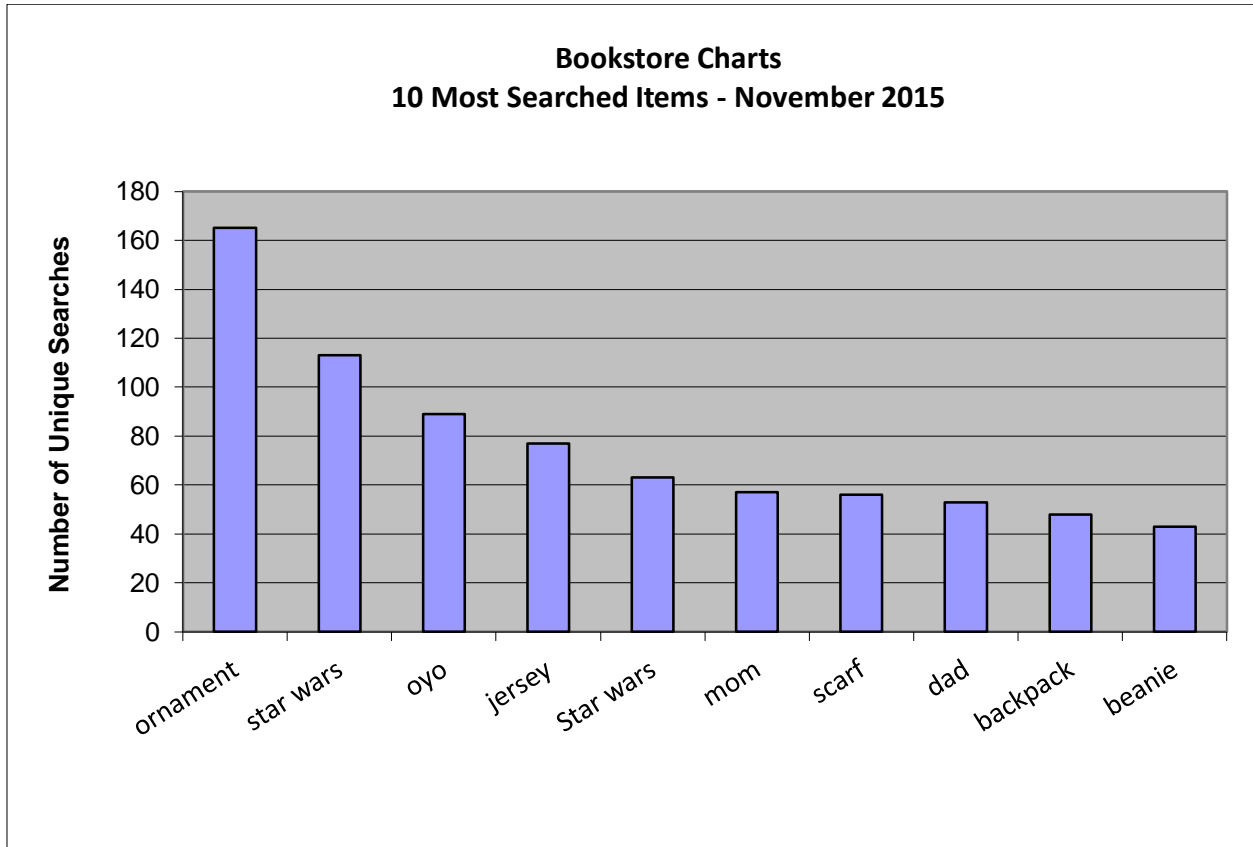
*The information contained in this document is the exclusive and confidential property of The University of Southern California - Auxiliary Services IT February not be shared with any other parties without the written permission of The University of Southern California - Auxiliary Service.*



# USCAUXILIARYSERVICESIT

## Website Reports

November 2015



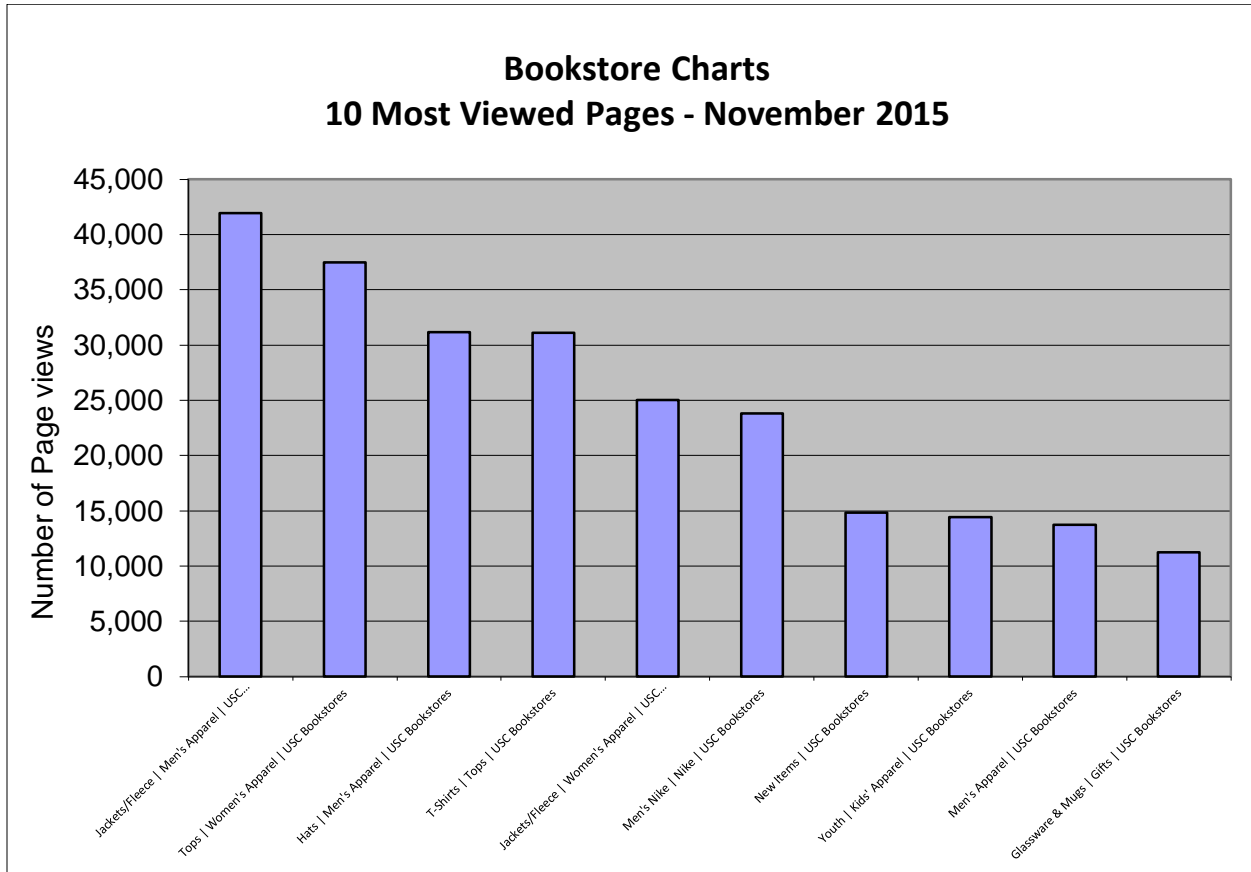
**Confidential:**

*The information contained in this document is the exclusive and confidential property of The University of Southern California - Auxiliary Services IT. February not be shared with any other parties without the written permission of The University of Southern California - Auxiliary Service.*

# USCAUXILIARYSERVICESIT

## Website Reports

November 2015



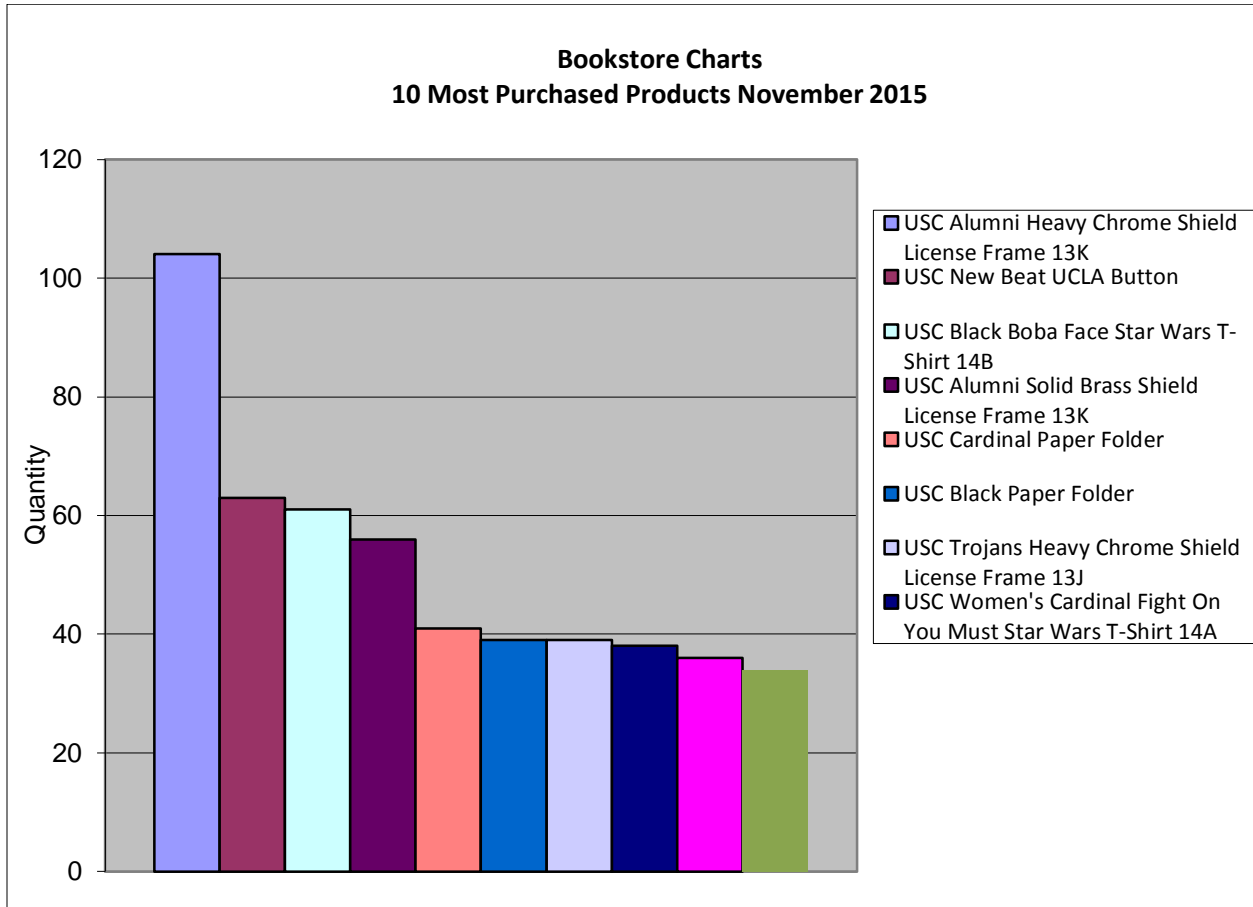
Confidential:

*The information contained in this document is the exclusive and confidential property of The University of Southern California - Auxiliary Services IT February not be shared with any other parties without the written permission of The University of Southern California - Auxiliary Service.*

# USCAUXILIARYSERVICESIT

## Website Reports

November 2015



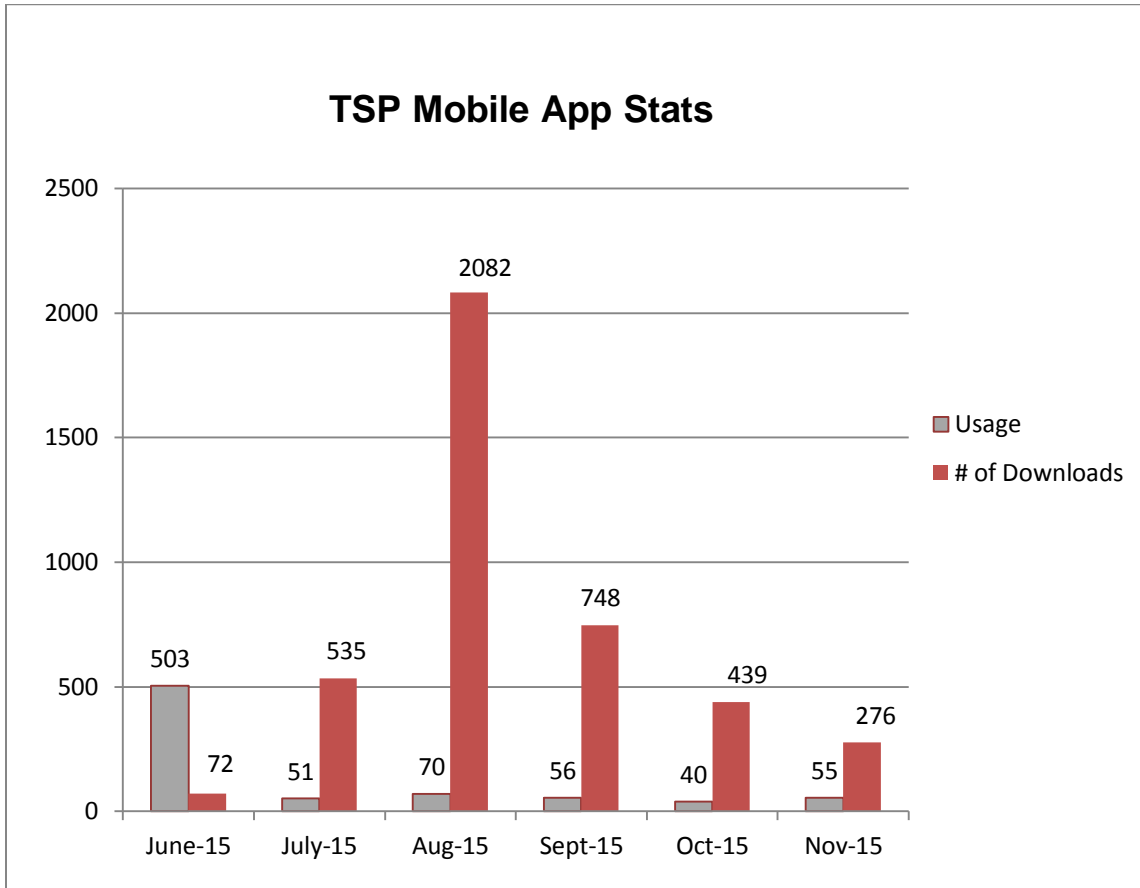
Confidential:

*The information contained in this document is the exclusive and confidential property of The University of Southern California - Auxiliary Services IT February not be shared with any other parties without the written permission of The University of Southern California - Auxiliary Service.*

# USCAUXILIARYSERVICESIT

## Website Reports

November 2015



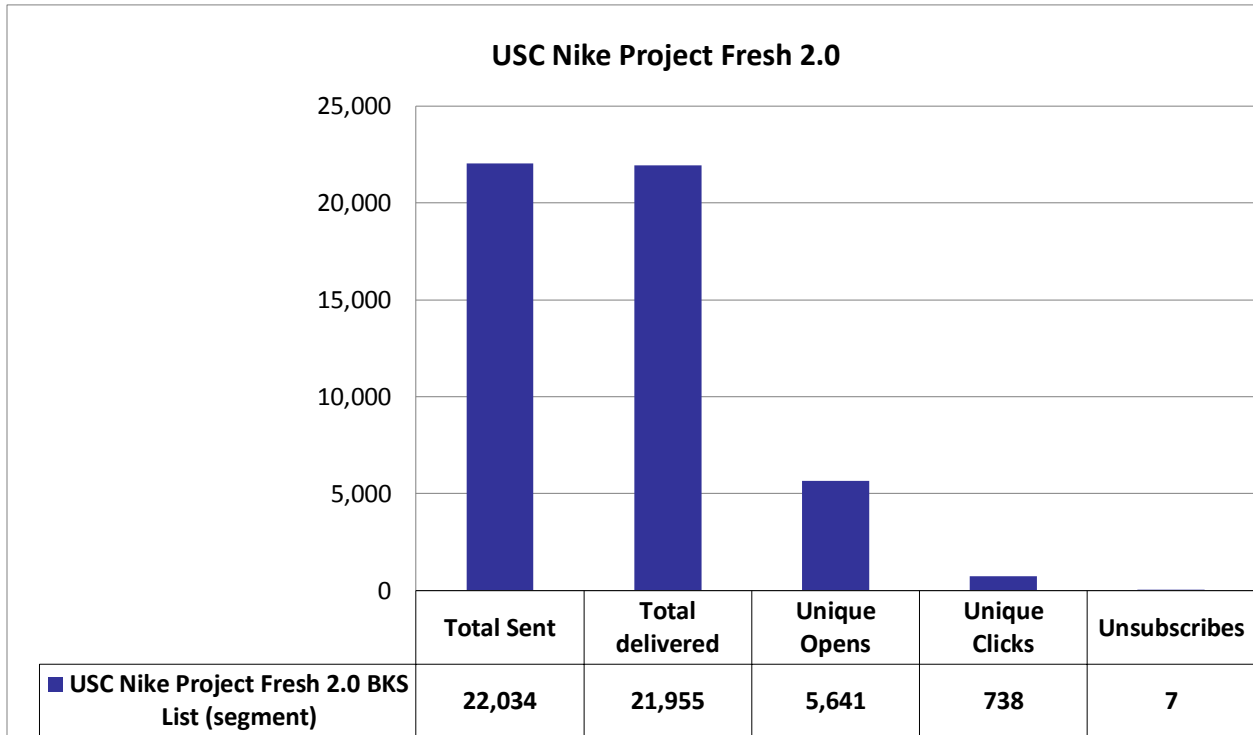
**Confidential:**

*The information contained in this document is the exclusive and confidential property of The University of Southern California - Auxiliary Services IT. February not be shared with any other parties without the written permission of The University of Southern California - Auxiliary Service.*

# USCAUXILIARYSERVICESIT

## Email Campaign Reports

November 2015



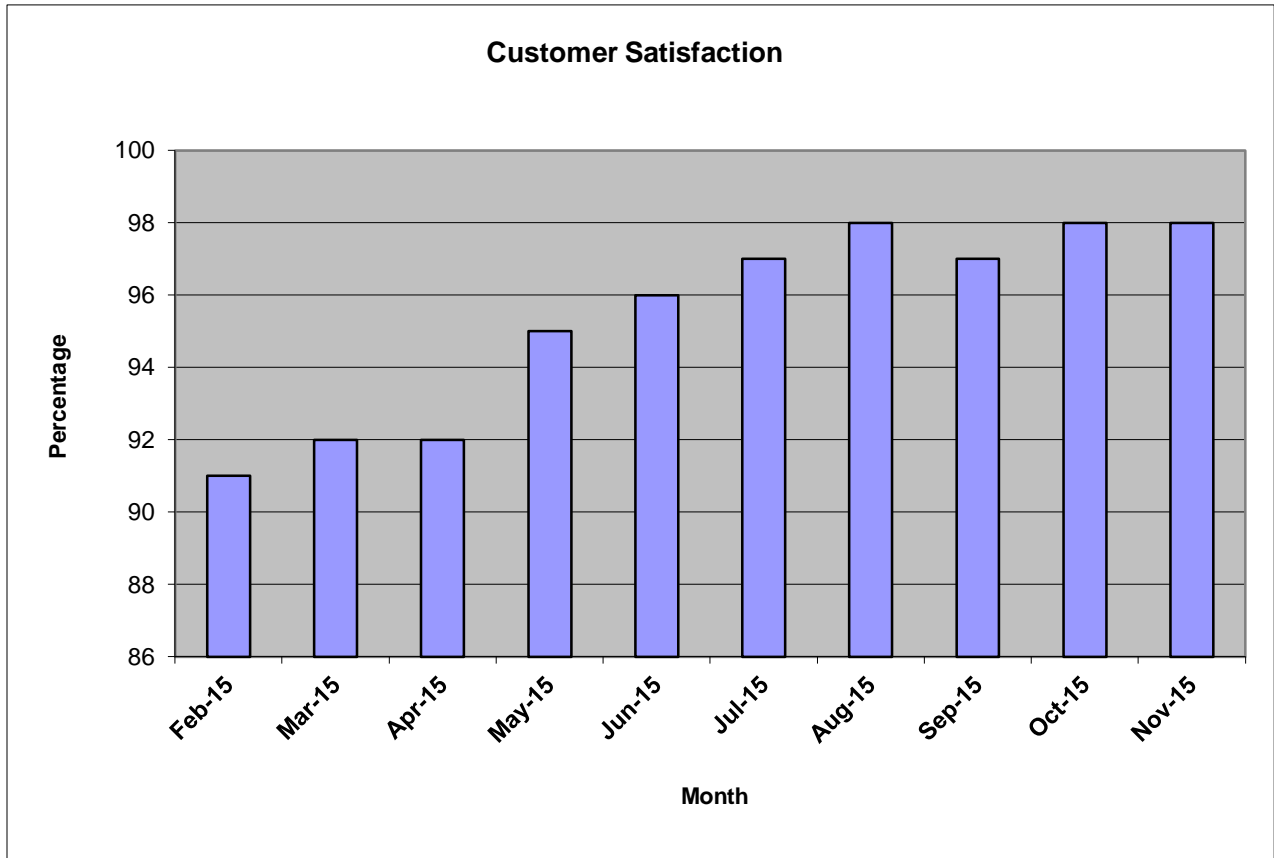
**Confidential:**

*The information contained in this document is the exclusive and confidential property of The University of Southern California - Auxiliary Services IT February not be shared with any other parties without the written permission of The University of Southern California - Auxiliary Service.*

# USCAUXILIARYSERVICESIT

## Email Campaign Reports

November 2015



**Confidential:**

*The information contained in this document is the exclusive and confidential property of The University of Southern California - Auxiliary Services IT. February not be shared with any other parties without the written permission of The University of Southern California - Auxiliary Service.*

**THANK YOU!!**

**Confidential:**

*The information contained in this document is the exclusive and confidential property of The University of Southern California - Auxiliary Services IT  
February not be shared with any other parties without the written permission of The University of Southern California - Auxiliary Service.*